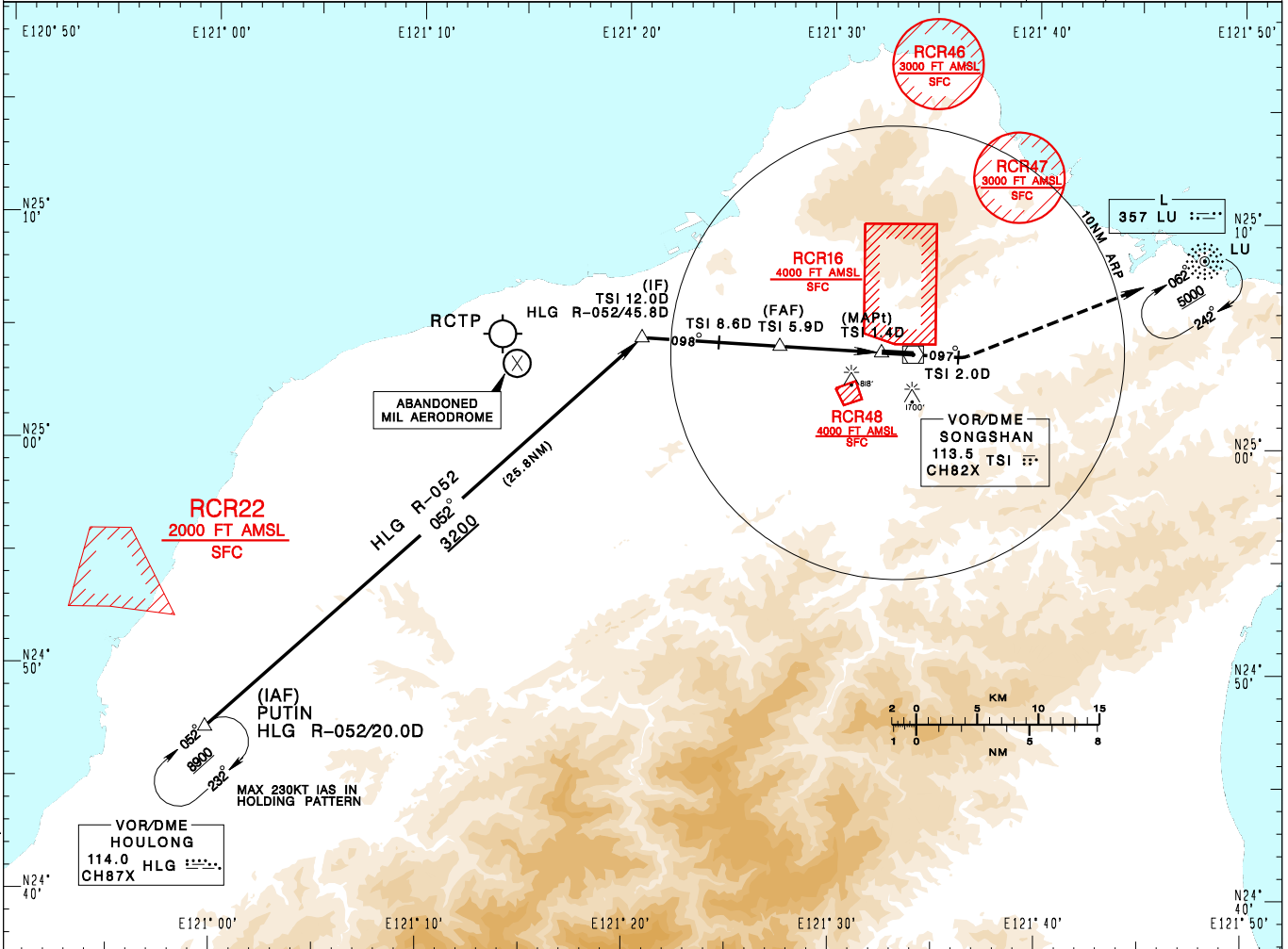


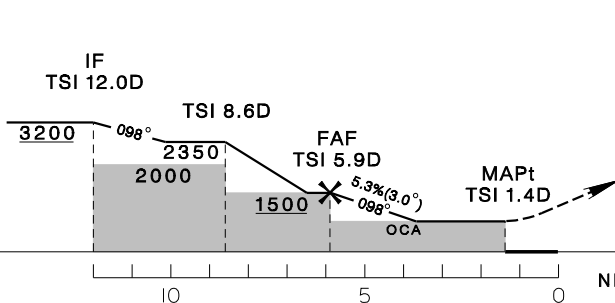
臺北/松山機場
TAIPEI/SONGSHAN AD

RCSS
VOR RWY10

TAIPEI APP 119.7 119.6 125.1	SONGSHAN TWR 118.1	ATIS 127.4 341	VAR 5°W-2022 ↑	9100' MSA ARP 25NM	
Apt Elev: 18'	Rwy10 THR Elev: 13'	Trans Level: FL130			Trans Alt: 11,000'
BEARINGS ARE MAGNETIC; DISTANCES ARE NAUTICAL MILES; ELEVATIONS, HEIGHTS IN FEET					



5.9DME	5.0DME	4.0DME	DIST to TSI
1500	1200	890	ADVISORY ALT



MISSED APCH:
CLIMB DIRECT TO TSI, THEN TRACK TSI R-097 TO TSI 2.0D, THEN TURN LEFT DIRECT TO LU, CLIMB TO 5000 AND HOLD.
IF UNABLE TO REACH 5000 AT LU, ADVISE ATC FOR RADAR VECTOR.

MINIMA (OCA IN FT, VIS IN M, OCH IN FT)				
CATEGORY	A	B	C	D
STRAIGHT IN	860/800 RVR 750 842	860/1200 RVR 1200 842	860/3100 842	
STRAIGHT IN (ALS OUT)	860/1600 842	860/2000 842	860/3800 842	
CIRCLING	1180/3600 1162	NA		

NOTE
1. A 1700ft-HIGH BUILDING AT 2.1 NM SOUTH OF THR 28.
2. A 818ft-HIGH BUILDING AT 2 NM SW OF THR 10.
3. CIRCLING ONLY AUTHORIZED FOR CAT A HELICOPTERS.

*DME REQUIRED.

CHANGES: OCA, IAF, LEG INFORMATION; RCR49 COMPLETELY WITHDRAWN; MAG VAR AND TRACK